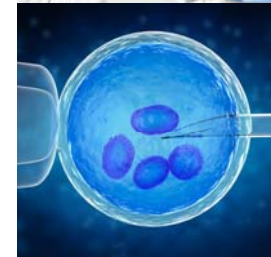




Class II biological safety cabinet
for binocular and microscope

Bin-Box

Model	Bin-Box 11-08	Bin-Box 14-08	Bin-Box 17-08	Bin-Box 22-08
Internal dimensions (W x D x H), mm	1100 x 800 x 1000	1400 x 800 x 1000	1700 x 800 x 1000	2200 x 800 x 1000
External dimensions (W x D x H), mm	1350 x 1100 x 2280	1650 x 1100 x 2280	1950 x 1100 x 2280	2450 x 1100 x 2280
Weight	260 kg	360 kg	450 kg	550 kg
Internal brightness	>750 lux			
Max consumption	1 800 W	2 000 W	2 200 W	2 500 W
Down Flow	1 270 m ³ /hour	1 600 m ³ /hour	1 950 m ³ /hour	2 500 m ³ /hour
Exhaust Flow	1 850 m ³ /hour	2 240 m ³ /hour	2 800 m ³ /hour	3 450 m ³ /hour
Air barrier velocity	> 0,45 meter/sec			
Voltage—frequency	230V ±10% - 50 Hz			
User protection	EN 12469			
Product protection	ISO 5			



Noroit is committed to eco—design and production:



- Low energy building production plant,
- Recycling of 95% of production waste,
- Collecting and treatment of 100% of chemical waste (Noroit is member of the « Click Eco » network,),
- Local subcontracting,

Noroit

13 rue des Coteaux de Grand Lieu - 44830 Bouaye - FRANCE
Tel: 0033 / 240 501 277 - contact@noroitlabo.com

www.noroitlabo.com



Absolute protection of the user, the samples and environment

Complies with the EN 12469 standard, regarding the user safety.

- Class 100-ISO5,
- Double ventilation (downflow-exhaust),
- HEPA H14 filtering,
- G4 pre-filters,
- Airflows measurement by anemometers,
- Visual and audible alarms.

Applications

- Analysis of infectious agents,
- In vitro fertilization,
- Microsurgery,
- Preparation of corneal transplants,
- Transgenesis,
- Murine embryo's sampling and reimplantation,
- Avian embryo's sampling and reimplantation.

Additional range

- Chemical protection, by filtration active carbon extracted.
- Ducted exhaust.

Configuration according to your needs

Adaptation, customisation, many available options on request.
Contact us!



Bin-Box

YOUR EXPERIMENTS ARE WORTH A LOOK!

The Bin-Box construction is based on that of a type II Safety Cabinet and complies with the EN12469 requirements for the operator's safety.

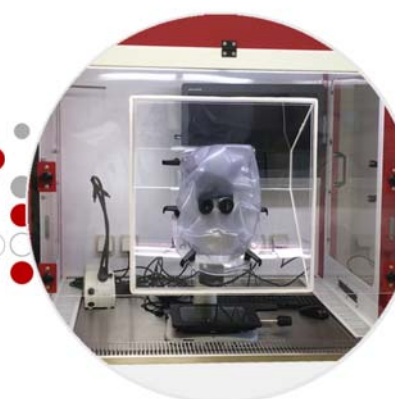
The eyepieces of the microscope passes through the front window, via a flexible tight port, ensuring an absolute protection to the user.



COMPLIES WITH EVERY MODELS OF MICROSCOPES AND BINOCULARS



FRONT WINDOW EQUIPPED WITH A FLEXIBLE PORT TO FIT AROUND THE MICROSCOPE'S EYEPIECES!



CUSTOMISATION

- Heating plate,
- UV germicide decontamination,
- Articulated arm for PC stand,
- Embedded screen,
- Additional electrical outlets,
- Work tray installed on air springs when a confocal microscope is used,
- Ducted exhaust.

OPTION FOR ABSOLUTE CONTAINMENT

- Air tight working volume,
- Front window equipped with gloves,
- Secure transfer to an I-Box isolateur, thru a Double Door Transfer Port.

ROTATIVE CLOSING PANEL

- Used to close the Bin-Box when the unit is lift unused, or during the UV irradiation cycle, if the option is selected.

QUALIFICATION

- HEPA filters efficiency,
- Particles counting,
- Airflow mapping,
- Alarms control,
- Ventilation control,
- Mechanical control.

TECHNICAL SPECIFICATIONS

Front window equipped with a flexible port to fit around the microscope's eyepieces

For a natural and ergonomic working position.

Wide opening of the front window

To enable the complete cleaning and surface decontamination of the internal volume.

Transparent and removable side panels, made of PMMA

To gain access to the microscope or loupe, for maintenance purposes.

Eye-level control panel

Parameters are easy to check at a glimpse,
Rapid start, user friendly keyboard.

Work tray is bowl shaped, with anti-vibration frame under the microscope

For an easy access to the samples or animals, examined under the microscope, without any bothersome vibration.

Tight ports for cables

To connect the microscope or other house apparatus to a PC or peripherals located outside the Bin-Box.

